

VJ Series

configuration options and specifications

*** Prefix**

- VJ:** Flat opaque cover
- RVJ:** Raised opaque cover
- CVJ:** Flat cover with clearview window
- VJB:** Flat cover with bonded window
- RVJB:** Raised cover with bonded window
- VJG:** Flat cover with gasketed window

**** Suffix**

- W:** Stainless steel corner screws
- HW:** Stainless steel continuous hinge and stainless steel corner screws
- HWPL:** Stainless steel continuous hinge and stainless steel padlockable latch(es)
- HWLL:** Stainless steel continuous hinge and stainless steel hinge latch(es)
- NHW:** Non-metallic hinges and stainless steel corner screws
- NHWPL:** Non-metallic hinges and stainless steel padlockable latch(es)
- NHWLL:** Non-metallic hinges and stainless steel twist latch(es)
- WPB:** Push-button holes and stainless steel corner screws

Features

- All VJ enclosures were designed to meet the Joint Industrial Council (JIC) standards in the United States.
- Enclosures are maintenance free and corrosion resistant.
- Bases and opaque covers are made from hot compression molded halogen free, self extinguishing fiberglass reinforced polyester (FRP) that can withstand continuous temperatures from -58°F to 302°F (-50°C to 150°C) and momentary exposure to temperatures up to 392°F (200°C).
- Windows are made from 1/4" transparent Lexan polycarbonate.
- All enclosures can be easily modified to customer specifications.
- Gaskets are made from continuously poured polyurethane foam.
- Molded on mounting flanges increase strength.
- Corner ribs reinforce strength in the cover corners.

Applications

VJ enclosures are designed for use as electrical junction boxes in highly corrosive environments and provide protection for equipment and operators from indirect electrical contact.

Standards

IEC 60529 (IP66) EN 60529 (IP66)
 IEC 60439-1 EN 60439-1
 IEC 50298 EN 50298

Approvals

UL Listed Types 3, 3R, 4, 4X, 12 & 13 KEMA
 CSA 3, 3R, 4, 4X, 12 & 13 CEBEC
 AS Australian Standards 3131-1991 RoHS
 LLOYD'S Register of Shipping CE



Opaque Cover Enclosures (VJ)	10
Raised Cover Enclosures (RVJ)	12
Clearview Cover Enclosures (CVJ)	14
Bonded Window Cover Enclosures (VJB)	16
Raised Cover with Bonded Window (RVJB)	18
Gasketed Window Cover Enclosures (VJG)	20
Push-button Unit Enclosures	22
Window Kits	24
Back Plates	25
Front Plates	26
Accessories	27



Configurations

- W:** Stainless steel corner screws
- HW:** Stainless steel continuous hinge and stainless steel corner screws
- HWPL:** Stainless steel continuous hinge and stainless steel padlockable latch(es)
- HWLL:** Stainless steel continuous hinge and stainless steel hinge latch(es)
- NHW:** Non-metallic hinges and stainless steel corner screws
- NHWPL:** Non-metallic hinges and stainless steel padlockable latch(es)
- NHWLL:** Non-metallic hinges and stainless steel twist latch(es)

Features

- All VJ enclosures were designed to meet the Joint Industrial Council (JIC) standards in the United States.
- Enclosures are maintenance free and corrosion resistant.
- Bases and opaque covers are made from hot compression molded halogen free, self extinguishing fiberglass reinforced polyester (FRP) that can withstand continuous temperatures from -58°F to 302°F (-50°C to 150°C) and momentary exposure to temperatures up to 392°F (200°C).
- All enclosures can be easily modified to customer specifications.
- Gaskets are made from continuously poured polyurethane foam.
- Molded on mounting flanges increase strength.
- Corner ribs reinforce strength in the cover corners.

Applications

VJ enclosures are designed for use as electrical junction boxes in highly corrosive environments and provide protection for equipment and operators from indirect electrical contact.

Standards

IEC 60529 (IP66) EN 60529 (IP66)
IEC 60439-1 EN 60439-1
IEC 50298 EN 50298

Approvals

UL Listed Types 3, 3R, 4, 4X, 12 & 13
CSA 3, 3R, 4, 4X, 12 & 13
AS Australian Standards 3131-1991
LLOYD'S Register of Shipping

KEMA
CEBEC
RoHS
CE



Part Number	Exterior Dimensions	Interior Dimensions	Weight	Back Plate	Front Plate
	H x W x D Inches (mm)	H x W x D Inches (mm)	Lbs (kg)	A: Aluminum S: Steel N: Non-Metallic	A: Aluminum
VJ606W VJ606HW VJ606HWPL1 VJ606HWLL1 VJ606NHW VJ606NHWPL1 VJ606NHWLL1	7.31 x 7.31 x 4.92 (186 x 186 x 125)	6 x 6 x 4.64 (152 x 152 x 118)	2.8 (1.27)	MP606A MP606S MP606N	VFP606A VFPH606A VFPH606A-KIT
VJ806W VJ806HW VJ806HWPL1 VJ806HWLL1 VJ806NHW VJ806NHWPL1 VJ806NHWLL1	9.31 x 7.31 x 4.92 (236 x 186 x 125)	8 x 6 x 4.64 (203 x 152 x 118)	3.8 (1.72)	MP806A MP806S MP806N	VFP806A VFPH806A VFPH806A-KIT
VJ1008W VJ1008HW VJ1008HWPL1 VJ1008HWLL1 VJ1008NHW VJ1008NHWPL1 VJ1008NHWLL1	11.31 x 9.31 x 5.43 (287 x 236 x 138)	10 x 8 x 5.15 (254 x 203 x 131)	4.8 (2.18)	MP1008A MP1008S MP1008N	VFP1008A VFPH1008A VFPH1008A-KIT
VJ1210W VJ1210HW VJ1210HWPL2 VJ1210HWLL2 VJ1210NHW VJ1210NHWPL2 VJ1210NHWLL2	13.31 x 11.31 x 5.60 (338 x 287 x 142)	12 x 10 x 5.27 (305 x 254 x 134)	6.3 (2.86)	MP1210A MP1210S MP1210N	VFP1210A VFPH1210A VFPH1210A-KIT
VJ1412W VJ1412HW VJ1412HWPL2 VJ1412HWLL2 VJ1412NHW VJ1412NHWPL2 VJ1412NHWLL2	15.31 x 13.31 x 6.60 (389 x 338 x 168)	14 x 12 x 6.27 (356 x 305 x 159)	8.6 (3.90)	MP1412A MP1412S MP1412N	VFP1412A VFPH1412A VFPH1412A-KIT
VJ1614W VJ1614HW VJ1614HWPL2 VJ1614HWLL2 VJ1614NHW VJ1614NHWPL2 VJ1614NHWLL2	17.31 x 15.31 x 6.67 (440 x 389 x 169)	16 x 14 x 6.41 (406 x 356 x 163)	10.6 (4.81)	MP1614A MP1614S MP1614N	VFP1614A VFPH1614A VFPH1614A-KIT
VJ1816W VJ1816HW VJ1816HWPL2 VJ1816HWLL2 VJ1816NHW VJ1816NHWPL2 VJ1816NHWLL2	19.31 x 17.31 x 9.58 (490 x 440 x 243)	18 x 16 x 9.33 (457 x 406 x 237)	14 (6.35)	MP1816A MP1816S MP1816N	VFP1816A VFPH1816A VFPH1816A-KIT

Configurations

- W:** Stainless steel corner screws
- HW:** Stainless steel continuous hinge and stainless steel corner screws
- HWPL:** Stainless steel continuous hinge and stainless steel padlockable latch(es)
- HWLL:** Stainless steel continuous hinge and stainless steel hinge latch(es)
- NHW:** Non-metallic hinges and stainless steel corner screws
- NHWPL:** Non-metallic hinges and stainless steel padlockable latch(es)
- NHWLL:** Non-metallic hinges and stainless steel twist latch(es)

Features

- All RVJ enclosures were designed to meet the Joint Industrial Council (JIC) standards in the United States.
- Enclosures are maintenance free and corrosion resistant.
- Bases and raised opaque covers are made from hot compression molded halogen free, self extinguishing fiberglass reinforced polyester (FRP) that can withstand continuous temperatures from -58°F to 302°F (-50°C to 150°C) and momentary exposure to temperatures up to 392°F (200°C).
- All enclosures can be easily modified to customer specifications.
- Gaskets are made from continuously poured polyurethane foam.
- Molded on mounting flanges increase strength.
- Corner ribs reinforce strength in the cover corners.

Applications

RVJ enclosures are designed for use as electrical junction boxes in highly corrosive environments and provide protection for equipment and operators from indirect electrical contact.

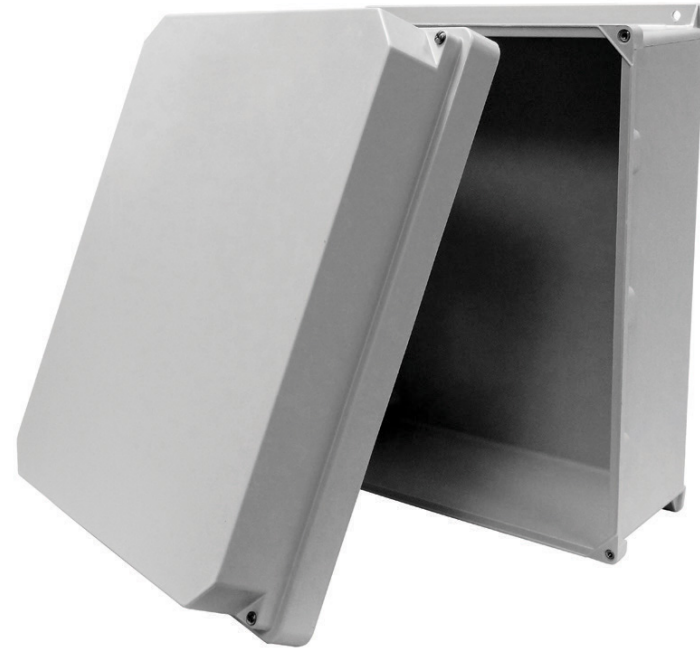
Standards

IEC 60529 (IP66) EN 60529 (IP66)
IEC 60439-1 EN 60439-1
IEC 50298 EN 50298

Approvals

UL Listed Types 3, 3R, 4, 4X, 12 & 13
CSA 3, 3R, 4, 4X, 12 & 13
AS Australian Standards 3131-1991
LLOYD'S Register of Shipping

KEMA
CEBEC
RoHS
CE



Part Number	Exterior Dimensions	Interior Dimensions	Weight	Back Plate	Front Plate
	H x W x D Inches (mm)	H x W x D Inches (mm)	Lbs (kg)	A: Aluminum S: Steel N: Non-Metallic	A: Aluminum
RVJ1008W RVJ1008HW RVJ1008HWPL1 RVJ1008HWLL1 RVJ1008NHW RVJ1008NHWPL1 RVJ1008NHWLL1	11.31 x 9.31 x 6.99 (287 x 236 x 178)	10 x 8 x 6.66 (254 x 203 x 169)	4.9 (2.22)	MP1008A MP1008S MP1008N	VFP1008A VFP1008A VFP1008A-KIT
RVJ1210W RVJ1210HW RVJ1210HWPL2 RVJ1210HWLL2 RVJ1210NHW RVJ1210NHWPL2 RVJ1210NHWLL2	13.31 x 11.31 x 7.11 (338 x 287 x 181)	12 x 10 x 6.84 (305 x 254 x 174)	6.5 (2.95)	MP1210A MP1210S MP1210N	VFP1210A VFP1210A VFP1210A-KIT
RVJ1412W RVJ1412HW RVJ1412HWPL2 RVJ1412HWLL2 RVJ1412NHW RVJ1412NHWPL2 RVJ1412NHWLL2	15.31 x 13.31 x 8.26 (389 x 338 x 210)	14 x 12 x 7.95 (356 x 305 x 202)	8.8 (3.99)	MP1412A MP1412S MP1412N	VFP1412A VFP1412A VFP1412A-KIT
RVJ1614W RVJ1614HW RVJ1614HWPL2 RVJ1614HWLL2 RVJ1614NHW RVJ1614NHWPL2 RVJ1614NHWLL2	17.31 x 15.31 x 8.26 (440 x 389 x 209)	16 x 14 x 7.95 (406 x 356 x 202)	10.8 (4.90)	MP1614A MP1614S MP1614N	VFP1614A VFP1614A VFP1614A-KIT
RVJ1816W RVJ1816HW RVJ1816HWPL2 RVJ1816HWLL2 RVJ1816NHW RVJ1816NHWPL2 RVJ1816NHWLL2	19.31 x 17.31 x 11.08 (490 x 440 x 281)	18 x 16 x 10.83 (457 x 406 x 275)	14.3 (6.49)	MP1816A MP1816S MP1816N	VFP1816A VFP1816A VFP1816A-KIT

Configurations

- W:** Stainless steel corner screws
- HW:** Stainless steel continuous hinge and stainless steel corner screws
- HWPL:** Stainless steel continuous hinge and stainless steel padlockable latch(es)
- HWLL:** Stainless steel continuous hinge and stainless steel hinge latch(es)
- NHW:** Non-metallic hinges and stainless steel corner screws
- NHWPL:** Non-metallic hinges and stainless steel padlockable latch(es)
- NHWLL:** Non-metallic hinges and stainless steel twist latch(es)

Features

- All CVJ enclosures were designed to meet the Joint Industrial Council (JIC) standards in the United States.
- Enclosures are maintenance free and corrosion resistant.
- Bases and covers are made from hot compression molded halogen free, self extinguishing fiberglass reinforced polyester (FRP) that can withstand continuous temperatures from -58°F to 302°F (-50°C to 150°C) and momentary exposure to temperatures up to 392°F (200°C).
- Windows are made from 3/16" transparent Lexan polycarbonate.
- All enclosures can be easily modified to customer specifications.
- Gaskets are made from continuously poured polyurethane foam.
- Molded on mounting flanges increase strength.
- Corner ribs reinforce strength in the cover corners.

Applications

CVJ enclosures are designed for use as electrical junction boxes in highly corrosive environments and provide protection for equipment and operators from indirect electrical contact where visibility of internal components is necessary.

Standards

IEC 60529 (IP66) EN 60529 (IP66)
IEC 60439-1 EN 60439-1
IEC 50298 EN 50298

Approvals

UL Listed Types 3, 3R, 4, 4X, 12 & 13
CSA 3, 3R, 4, 4X, 12 & 13
AS Australian Standards 3131-1991
LLOYD'S Register of Shipping

KEMA
CEBEC
RoHS
CE



Part Number	Exterior Dimensions	Interior Dimensions	Weight	Back Plate	Front Plate
	H x W x D Inches (mm)	H x W x D Inches (mm)	Lbs (kg)	A: Aluminum S: Steel N: Non-Metallic	A: Aluminum
CVJ606W CVJ606HW CVJ606HWPL1 CVJ606HWLL1 CVJ606NHW CVJ606NHWPL1 CVJ606NHWLL1	7.31 x 7.31 x 4.92 (186 x 186 x 125)	6 x 6 x 4.64 (152 x 152 x 118)	2.8 (1.27)	MP606A MP606S MP606N	VFP606A VFPH606A VFPH606A-KIT
CVJ806W CVJ806HW CVJ806HWPL1 CVJ806HWLL1 CVJ806NHW CVJ806NHWPL1 CVJ806NHWLL1	9.31 x 7.31 x 4.92 (236 x 186 x 125)	8 x 6 x 4.64 (203 x 152 x 118)	3.8 (1.72)	MP806A MP806S MP806N	VFP806A VFPH806A VFPH806A-KIT
CVJ1008W CVJ1008HW CVJ1008HWPL1 CVJ1008HWLL1 CVJ1008NHW CVJ1008NHWPL1 CVJ1008NHWLL1	11.31 x 9.31 x 5.43 (287 x 236 x 138)	10 x 8 x 5.15 (254 x 203 x 131)	4.8 (2.18)	MP1008A MP1008S MP1008N	VFP1008A VFPH1008A VFPH1008A-KIT
CVJ1210W CVJ1210HW CVJ1210HWPL2 CVJ1210HWLL2 CVJ1210NHW CVJ1210NHWPL2 CVJ1210NHWLL2	13.31 x 11.31 x 5.60 (338 x 287 x 142)	12 x 10 x 5.27 (305 x 254 x 134)	6.3 (2.86)	MP1210A MP1210S MP1210N	VFP1210A VFPH1210A VFPH1210A-KIT
CVJ1412W CVJ1412HW CVJ1412HWPL2 CVJ1412HWLL2 CVJ1412NHW CVJ1412NHWPL2 CVJ1412NHWLL2	15.31 x 13.31 x 6.60 (389 x 338 x 168)	14 x 12 x 6.27 (356 x 305 x 159)	8.6 (3.90)	MP1412A MP1412S MP1412N	VFP1412A VFPH1412A VFPH1412A-KIT
CVJ1614W CVJ1614HW CVJ1614HWPL2 CVJ1614HWLL2 CVJ1614NHW CVJ1614NHWPL2 CVJ1614NHWLL2	17.31 x 15.31 x 6.67 (440 x 389 x 169)	16 x 14 x 6.41 (406 x 356 x 163)	10.6 (4.81)	MP1614A MP1614S MP1614N	VFP1614A VFPH1614A VFPH1614A-KIT
CVJ1816W CVJ1816HW CVJ1816HWPL2 CVJ1816HWLL2 CVJ1816NHW CVJ1816NHWPL2 CVJ1816NHWLL2	19.31 x 17.31 x 9.58 (490 x 440 x 243)	18 x 16 x 9.33 (457 x 406 x 237)	14 (6.35)	MP1816A MP1816S MP1816N	VFP1816A VFPH1816A VFPH1816A-KIT

Configurations

- W:** Stainless steel corner screws
- HW:** Stainless steel continuous hinge and stainless steel corner screws
- HWPL:** Stainless steel continuous hinge and stainless steel padlockable latch(es)
- HWLL:** Stainless steel continuous hinge and stainless steel hinge latch(es)
- NHW:** Non-metallic hinges and stainless steel corner screws
- NHWPL:** Non-metallic hinges and stainless steel padlockable latch(es)
- NHWLL:** Non-metallic hinges and stainless steel twist latch(es)

Features

- All VJB enclosures were designed to meet the Joint Industrial Council (JIC) standards in the United States.
- Enclosures are maintenance free and corrosion resistant.
- Bases and covers are made from hot compression molded halogen free, self extinguishing fiberglass reinforced polyester (FRP) that can withstand continuous temperatures from -58°F to 302°F (-50°C to 150°C) and momentary exposure to temperatures up to 392°F (200°C).
- Windows are made from 1/4" transparent Lexan polycarbonate.
- All enclosures can be easily modified to customer specifications.
- Gaskets are made from continuously poured polyurethane foam.
- Molded on mounting flanges increase strength.
- Corner ribs reinforce strength in the cover corners.

Applications

VJB enclosures are designed for use as electrical junction boxes in highly corrosive environments and provide protection for equipment and operators from indirect electrical contact where visibility of internal components is necessary.

Standards

IEC 60529 (IP66)
IEC 60439-1
IEC 50298

Approvals

UL Listed Types 3, 3R, 4, 4X, 12 & 13
CSA 3, 3R, 4, 4X, 12 & 13
AS Australian Standards 3131-1991
LLOYD'S Register of Shipping

KEMA
CEBEC
RoHS
CE



Part Number	Exterior Dimensions	Interior Dimensions	Weight	Back Plate	Front Plate
	H x W x D Inches (mm)	H x W x D Inches (mm)	Lbs (kg)	A: Aluminum S: Steel N: Non-Metallic	A: Aluminum
VJB606W VJB606HW VJB606HWPL1 VJB606HWLL1 VJB606NHW VJB606NHWPL1 VJB606NHWLL1	7.31 x 7.31 x 4.92 (186 x 186 x 125)	6 x 6 x 4.64 (152 x 152 x 118)	2.8 (1.27)	MP606A MP606S MP606N	VFP606A VFPH606A VFPH606A-KIT
VJB806W VJB806HW VJB806HWPL1 VJB806HWLL1 VJB806NHW VJB806NHWPL1 VJB806NHWLL1	9.31 x 7.31 x 4.92 (236 x 186 x 125)	8 x 6 x 4.64 (203 x 152 x 118)	3.8 (1.72)	MP806A MP806S MP806N	VFP806A VFPH806A VFPH806A-KIT
VJB1008W VJB1008HW VJB1008HWPL1 VJB1008HWLL1 VJB1008NHW VJB1008NHWPL1 VJB1008NHWLL1	11.31 x 9.31 x 5.43 (287 x 236 x 138)	10 x 8 x 5.15 (254 x 203 x 131)	4.8 (2.18)	MP1008A MP1008S MP1008N	VFP1008A VFPH1008A VFPH1008A-KIT
VJB1210W VJB1210HW VJB1210HWPL2 VJB1210HWLL2 VJB1210NHW VJB1210NHWPL2 VJB1210NHWLL2	13.31 x 11.31 x 5.60 (338 x 287 x 142)	12 x 10 x 5.27 (305 x 254 x 134)	6.3 (2.86)	MP1210A MP1210S MP1210N	VFP1210A VFPH1210A VFPH1210A-KIT
VJB1412W VJB1412HW VJB1412HWPL2 VJB1412HWLL2 VJB1412NHW VJB1412NHWPL2 VJB1412NHWLL2	15.31 x 13.31 x 6.60 (389 x 338 x 168)	14 x 12 x 6.27 (356 x 305 x 159)	8.6 (3.90)	MP1412A MP1412S MP1412N	VFP1412A VFPH1412A VFPH1412A-KIT
VJB1614W VJB1614HW VJB1614HWPL2 VJB1614HWLL2 VJB1614NHW VJB1614NHWPL2 VJB1614NHWLL2	17.31 x 15.31 x 6.67 (440 x 389 x 169)	16 x 14 x 6.41 (406 x 356 x 163)	10.6 (4.81)	MP1614A MP1614S MP1614N	VFP1614A VFPH1614A VFPH1614A-KIT
VJB1816W VJB1816HW VJB1816HWPL2 VJB1816HWLL2 VJB1816NHW VJB1816NHWPL2 VJB1816NHWLL2	19.31 x 17.31 x 9.58 (490 x 440 x 243)	18 x 16 x 9.33 (457 x 406 x 237)	14 (6.35)	MP1816A MP1816S MP1816N	VFP1816A VFPH1816A VFPH1816A-KIT

Configurations

- W:** Stainless steel corner screws
- HW:** Stainless steel continuous hinge and stainless steel corner screws
- HWPL:** Stainless steel continuous hinge and stainless steel padlockable latch(es)
- HWLL:** Stainless steel continuous hinge and stainless steel hinge latch(es)
- NHW:** Non-metallic hinges and stainless steel corner screws
- NHWPL:** Non-metallic hinges and stainless steel padlockable latch(es)
- NHWLL:** Non-metallic hinges and stainless steel twist latch(es)

Features

- All RVJB enclosures were designed to meet the Joint Industrial Council (JIC) standards in the United States.
- Enclosures are maintenance free and corrosion resistant.
- Bases and raised opaque covers are made from hot compression molded halogen free, self extinguishing fiberglass reinforced polyester (FRP) that can withstand continuous temperatures from -58°F to 302°F (-50°C to 150°C) and momentary exposure to temperatures up to 392°F (200°C).
- Windows are made from 1/4" transparent Lexan polycarbonate.
- All enclosures can be easily modified to customer specifications.
- Gaskets are made from continuously poured polyurethane foam.
- Molded on mounting flanges increase strength.
- Corner ribs reinforce strength in the cover corners.

Applications

RVJB enclosures are designed for use as electrical junction boxes in highly corrosive environments and provide protection for equipment and operators from indirect electrical contact.

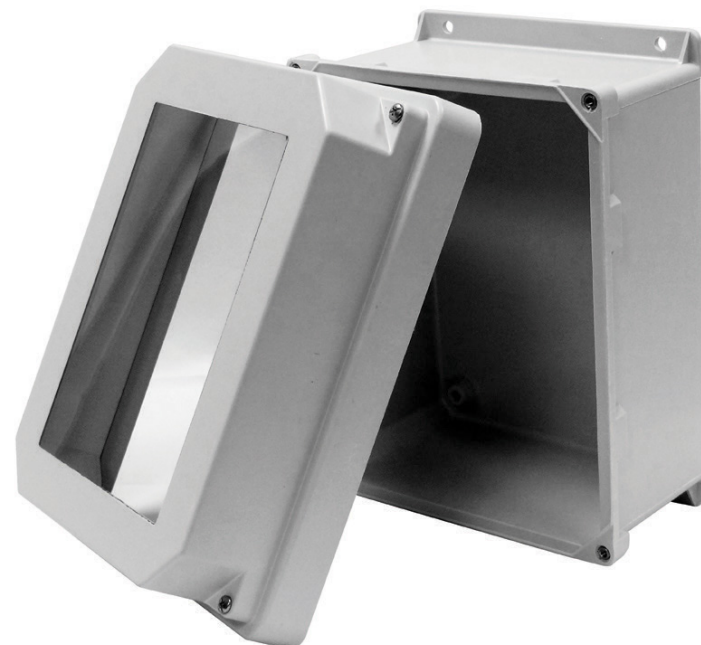
Standards

- IEC 60529 (IP66)
- IEC 60439-1
- IEC 50298

Approvals

- EN 60529 (IP66)
- EN 60439-1
- EN 50298
- UL Listed Types 3, 3R, 4, 4X, 12 & 13
- CSA 3, 3R, 4, 4X, 12 & 13
- AS Australian Standards 3131-1991
- LLOYD'S Register of Shipping

- KEMA
- CEBEC
- RoHS
- CE



Part Number	Exterior Dimensions	Interior Dimensions	Weight	Back Plate	Front Plate
	H x W x D Inches (mm)	H x W x D Inches (mm)	Lbs (kg)	A: Aluminum S: Steel N: Non-Metallic	A: Aluminum
RVJB1008W RVJB1008HW RVJB1008HWPL1 RVJB1008HWLL1 RVJB1008NHW RVJB1008NHWPL1 RVJB1008NHWLL1	11.31 x 9.31 x 6.99 (287 x 236 x 178)	10 x 8 x 6.66 (254 x 203 x 169)	4.9 (2.22)	MP1008A MP1008S MP1008N	VFP1008A VFPH1008A VFPH1008A-KIT
RVJB1210W RVJB1210HW RVJB1210HWPL2 RVJB1210HWLL2 RVJB1210NHW RVJB1210NHWPL2 RVJB1210NHWLL2	13.31 x 11.31 x 7.11 (338 x 287 x 181)	12 x 10 x 6.84 (305 x 254 x 174)	6.5 (2.95)	MP1210A MP1210S MP1210N	VFP1210A VFPH1210A VFPH1210A-KIT
RVJB1412W RVJB1412HW RVJB1412HWPL2 RVJB1412HWLL2 RVJB1412NHW RVJB1412NHWPL2 RVJB1412NHWLL2	15.31 x 13.31 x 8.26 (389 x 338 x 210)	14 x 12 x 7.95 (356 x 305 x 202)	8.8 (3.99)	MP1412A MP1412S MP1412N	VFP1412A VFPH1412A VFPH1412A-KIT
RVJB1614W RVJB1614HW RVJB1614HWPL2 RVJB1614HWLL2 RVJB1614NHW RVJB1614NHWPL2 RVJB1614NHWLL2	17.31 x 15.31 x 8.26 (440 x 389 x 209)	16 x 14 x 7.95 (406 x 356 x 202)	10.8 (4.90)	MP1614A MP1614S MP1614N	VFP1614A VFPH1614A VFPH1614A-KIT
RVJB1816W RVJB1816HW RVJB1816HWPL2 RVJB1816HWLL2 RVJB1816NHW RVJB1816NHWPL2 RVJB1816NHWLL2	19.31 x 17.31 x 11.08 (490 x 440 x 281)	18 x 16 x 10.83 (457 x 406 x 275)	14.3 (6.49)	MP1816A MP1816S MP1816N	VFP1816A VFPH1816A VFPH1816A-KIT

Configurations

- W:** Stainless steel corner screws
- HW:** Stainless steel continuous hinge and stainless steel corner screws
- HWPL:** Stainless steel continuous hinge and stainless steel padlockable latch(es)
- HWLL:** Stainless steel continuous hinge and stainless steel hinge latch(es)
- NHW:** Non-metallic hinges and stainless steel corner screws
- NHWPL:** Non-metallic hinges and stainless steel padlockable latch(es)
- NHWLL:** Non-metallic hinges and stainless steel twist latch(es)

Features

- All VJG enclosures were designed to meet the Joint Industrial Council (JIC) standards in the United States.
- Enclosures are maintenance free and corrosion resistant.
- Bases and covers are made from hot compression molded halogen free, self extinguishing fiberglass reinforced polyester (FRP) that can withstand continuous temperatures from -58°F to 302°F (-50°C to 150°C) and momentary exposure to temperatures up to 392°F (200°C).
- Windows are made from 1/4" transparent Lexan polycarbonate.
- All enclosures can be easily modified to customer specifications.
- Gaskets are made from continuously poured polyurethane foam.
- Molded on mounting flanges increase strength.
- Corner ribs reinforce strength in the cover corners.

Applications

VJG enclosures are designed for use as electrical junction boxes in highly corrosive environments and provide protection for equipment and operators from indirect electrical contact where visibility of internal components is necessary.

Standards

IEC 60529 (IP66) EN 60529 (IP66)
IEC 60439-1 EN 60439-1
IEC 50298 EN 50298

Approvals

UL Listed Types 3, 3R, 12 & 13
CSA 3, 3R, 12 & 13
AS Australian Standards 3131-1991
LLOYD'S Register of Shipping

KEMA
CEBEC
RoHS
CE



Part Number	Exterior Dimensions	Interior Dimensions	Weight	Back Plate	Front Plate
	H x W x D Inches (mm)	H x W x D Inches (mm)	Lbs (kg)	A: Aluminum S: Steel N: Non-Metallic	A: Aluminum
VJG606W VJG606HW VJG606HWPL1 VJG606HWLL1 VJG606NHW VJG606NHWPL1 VJG606NHWLL1	7.31 x 7.31 x 4.92 (186 x 186 x 125)	6 x 6 x 4.64 (152 x 152 x 118)	2.8 (1.27)	MP606A MP606S MP606N	VFP606A VFPH606A VFPH606A-KIT
VJG806W VJG806HW VJG806HWPL1 VJG806HWLL1 VJG806NHW VJG806NHWPL1 VJG806NHWLL1	9.31 x 7.31 x 4.92 (236 x 186 x 125)	8 x 6 x 4.64 (203 x 152 x 118)	3.8 (1.72)	MP806A MP806S MP806N	VFP806A VFPH806A VFPH806A-KIT
VJG1008W VJG1008HW VJG1008HWPL1 VJG1008HWLL1 VJG1008NHW VJG1008NHWPL1 VJG1008NHWLL1	11.31 x 9.31 x 5.43 (287 x 236 x 138)	10 x 8 x 5.15 (254 x 203 x 131)	4.8 (2.18)	MP1008A MP1008S MP1008N	VFP1008A VFPH1008A VFPH1008A-KIT
VJG1210W VJG1210HW VJG1210HWPL2 VJG1210HWLL2 VJG1210NHW VJG1210NHWPL2 VJG1210NHWLL2	13.31 x 11.31 x 5.60 (338 x 287 x 142)	12 x 10 x 5.27 (305 x 254 x 134)	6.3 (2.86)	MP1210A MP1210S MP1210N	VFP1210A VFPH1210A VFPH1210A-KIT
VJG1412W VJG1412HW VJG1412HWPL2 VJG1412HWLL2 VJG1412NHW VJG1412NHWPL2 VJG1412NHWLL2	15.31 x 13.31 x 6.60 (389 x 338 x 168)	14 x 12 x 6.27 (356 x 305 x 159)	8.6 (3.90)	MP1412A MP1412S MP1412N	VFP1412A VFPH1412A VFPH1412A-KIT
VJG1614W VJG1614HW VJG1614HWPL2 VJG1614HWLL2 VJG1614NHW VJG1614NHWPL2 VJG1614NHWLL2	17.31 x 15.31 x 6.67 (440 x 389 x 169)	16 x 14 x 6.41 (406 x 356 x 163)	10.6 (4.81)	MP1614A MP1614S MP1614N	VFP1614A VFPH1614A VFPH1614A-KIT
VJG1816W VJG1816HW VJG1816HWPL2 VJG1816HWLL2 VJG1816NHW VJG1816NHWPL2 VJG1816NHWLL2	19.31 x 17.31 x 9.58 (490 x 440 x 243)	18 x 16 x 9.33 (457 x 406 x 237)	14 (6.35)	MP1816A MP1816S MP1816N	VFP1816A VFPH1816A VFPH1816A-KIT

Configurations

WPB: 30.5 mm (NEMA sized) push-button holes and stainless steel corner screws

* Available with NEMA or IEC sized push button holes in any configuration.

* Available with hinges and/or latches

Features

- All VJ WPB enclosures were designed to meet the Joint Industrial Council (JIC) standards in the United States.
- Enclosures are maintenance free and corrosion resistant.
- Bases and covers are made from hot compression molded halogen free, self extinguishing fiberglass reinforced polyester (FRP) that can withstand continuous temperatures from -58°F to 302°F (-50°C to 150°C) and momentary exposure to temperatures up to 392°F (200°C).
- All enclosures can be easily modified to customer specifications.
- Gaskets are made from continuously poured polyurethane foam.
- Molded on mounting flanges increase strength.
- Corner ribs reinforce strength in the cover corners.

Applications

VJ WPB enclosures are designed for use as electrical push-button enclosures in highly corrosive environments and provide protection for equipment and operators from indirect electrical contact.

Standards

IEC 60529 (IP66)
IEC 60439-1
IEC 50298

EN 60529 (IP66)
EN 60439-1
EN 50298

Approvals

UL Listed Types 3, 3R, 4, 4X, 12 & 13
CSA 3, 3R, 4, 4X, 12 & 13
AS Australian Standards 3131-1991
LLOYD'S Register of Shipping

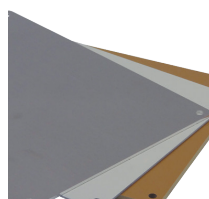
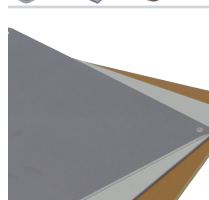
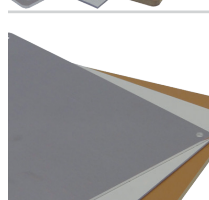
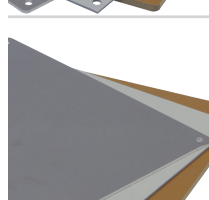
KEMA
CEBEC
RoHS
CE

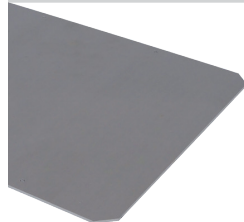
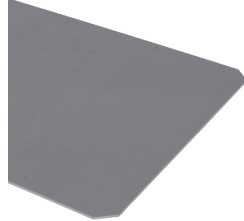


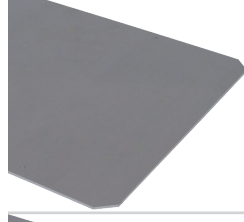
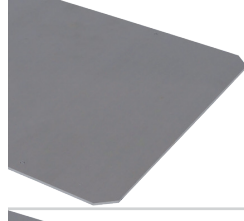
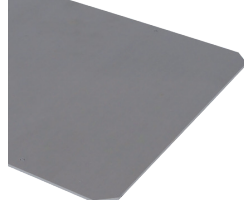


Part Number	Exterior Dimensions	Interior Dimensions	Weight	Back Plate	Push Button Holes
	H x W x D Inches (mm)	H x W x D Inches (mm)	Lbs (kg)	A: Aluminum S: Steel N: Non-Metallic	(Quantity) Size
VJ606WPB4	7.31 x 7.31 x 4.92 (186 x 186 x 125)	6 x 6 x 4.64 (152 x 152 x 118)	2.8 (1.27)	MP606A MP606S MP606N	(4) 30.5 mm
VJ806WPB6	9.31 x 7.31 x 4.92 (236 x 186 x 125)	8 x 6 x 4.64 (203 x 152 x 118)	3.8 (1.72)	MP806A MP806S MP806N	(6) 30.5 mm
VJ1008WPB9	11.31 x 9.31 x 5.43 (287 x 236 x 138)	10 x 8 x 5.15 (254 x 203 x 131)	4.8 (2.18)	MP1008A MP1008S MP1008N	(9) 30.5 mm
VJ1008WPB12	11.31 x 9.31 x 5.43 (287 x 236 x 138)	10 x 8 x 5.15 (254 x 203 x 131)	4.8 (2.18)	MP1008A MP1008S MP1008N	(12) 30.5 mm
VJ1210WPB16	13.31 x 11.31 x 5.60 (338 x 287 x 142)	12 x 10 x 5.27 (305 x 254 x 134)	6.3 (2.86)	MP1210A MP1210S MP1210N	(16) 30.5 mm
VJ1210WPB20	13.31 x 11.31 x 5.60 (338 x 287 x 142)	12 x 10 x 5.27 (305 x 254 x 134)	6.3 (2.86)	MP1210A MP1210S MP1210N	(20) 30.5 mm
VJ1412WPB25	15.31 x 13.31 x 6.60 (389 x 338 x 168)	14 x 12 x 6.27 (356 x 305 x 159)	8.6 (3.90)	MP1412A MP1412S MP1412N	(25) 30.5 mm
VJ1614WPB30	17.31 x 15.31 x 6.67 (440 x 389 x 169)	16 x 14 x 6.41 (406 x 356 x 163)	10.6 (4.81)	MP1614A MP1614S MP1614N	(30) 30.5 mm
VJ1816WPB42	19.31 x 17.31 x 9.58 (490 x 440 x 243)	18 x 16 x 9.33 (457 x 406 x 237)	14 (6.35)	MP1816A MP1816S MP1816N	(42) 30.5 mm

Custom push button solutions available...

Part Number	Exterior Dimensions	Viewing Area	Minimum Enclosure Size
	H x W x D Inches (mm)	H x W Inches (mm)	
SW32 	3.75 x 3.38 x .50 (95 x 86 x 13)	3.09 x 2.59 (78 x 66)	VJ606
SW44 	4.63 x 4.63 x .3125 (118 x 118 x 8)	3.7 x 3.7 (94 x 94)	VJ606
SW64 	7.31 x 5.75 x .3125 (186 x 146 x 8)	6.06 x 4.50 (154 x 114)	VJ806
SW84N with nameplate 	9.41 x 5.47 x .25 (239 x 139 x 6)	7.81 x 3.91 (198 x 99)	VJ806
SW84X 	8.50 x 5.75 x .25 (216 x 146 x 6)	7.81 x 3.91 (198 x 99)	VJ806
SW97 	10.31 x 8.25 x .25 (262 x 210 x 6)	8.81 x 6.75 (224 x 171)	VJ1008
95HCD Hinged Inspection Window 	9.50 x 5.68 x .52 (241 x 144 x 13)	8.94 x 5.13 (227 x 130)	VJ1008

Part Number	Dimensions	Material	Thickness	Weight	Enclosure
	H x W Inches (mm)		Inches (mm)	Lbs (kg)	Range
MP606A MP606S MP606N 	4.88 x 4.88 (124 x 124)	Aluminum Steel Non-Metallic	.08 (2) .06 (1.5) .1875 (4.8)	.25 (.11) .47 (.21) .22 (.10)	VJ606
MP806A MP806S MP806N 	6.75 x 4.88 (171 x 124)	Aluminum Steel Non-Metallic	.08 (2) .06 (1.5) .1875 (4.8)	.34 (.15) .62 (.28) .29 (.13)	VJ806
MP1008A MP1008S MP1008N 	8.75 x 6.88 (222 x 175)	Aluminum Steel Non-Metallic	.08 (2) .06 (1.5) .1875 (4.8)	.56 (.25) 1.04 (.47) .48 (.22)	VJ1008
MP1210A MP1210S MP1210N 	10.75 x 8.88 (273 x 226)	Aluminum Steel Non-Metallic	.08 (2) .06 (1.5) .1875 (4.8)	.84 (.38) 1.56 (.71) .72 (.33)	VJ1210
MP1412A MP1412S MP1412N 	12.75 x 10.88 (324 x 276)	Aluminum Steel Non-Metallic	.08 (2) .06 (1.5) .1875 (4.8)	1.18 (.54) 2.18 (.99) 1.01 (.46)	VJ1412
MP1614A MP1614S MP1614N 	14.75 x 12.88 (375 x 327)	Aluminum Steel Non-Metallic	.08 (2) .06 (1.5) .1875 (4.8)	1.57 (.71) 2.91 (1.32) 1.34 (.61)	VJ1614
MP1816A MP1816S MP1816N 	16.75 x 14.88 (425 x 378)	Aluminum Steel Non-Metallic	.08 (2) .06 (1.5) .1875 (4.8)	2.02 (.92) 3.74 (1.7) 1.73 (.78)	VJ1816

	Part Number	Dimensions	Material	Thickness	Weight	Style	Enclosure
		H x W Inches (mm)		Inches (mm)	Lbs (kg)		Range
	VFP606A VFPH606A VFPH606A-KIT	5.75 x 5.75 (146 x 146)	Aluminum	.08 (2)	.25 (.11)	Dead Front Hinged Installed Hinged Kit	VJ606
	VFP806A VFPH806A VFPH806A-KIT	7.75 x 5.75 (197 x 146)	Aluminum	.08 (2)	.34 (.15)	Dead Front Hinged Installed Hinged Kit	VJ806
	VFP1008A VFPH1008A VFPH1008A-KIT	9.75 x 7.75 (248 x 197)	Aluminum	.08 (2)	.56 (.25)	Dead Front Hinged Installed Hinged Kit	VJ1008
	VFP1210A VFPH1210A VFPH1210A-KIT	11.75 x 9.75 (298 x 248)	Aluminum	.08 (2)	.84 (.38)	Dead Front Hinged Installed Hinged Kit	VJ1210
	VFP1412A VFPH1412A VFPH1412A-KIT	13.75 x 11.75 (349 x 298)	Aluminum	.08 (2)	1.18 (.54)	Dead Front Hinged Installed Hinged Kit	VJ1412
	VFP1614A VFPH1614A VFPH1614A-KIT	15.75 x 13.75 (400 x 349)	Aluminum	.08 (2)	1.57 (.71)	Dead Front Hinged Installed Hinged Kit	VJ1614
	VFP1816A VFPH1816A VFPH1816A-KIT	17.75 x 15.75 (451 x 400)	Aluminum	.08 (2)	2.02 (.92)	Dead Front Hinged Installed Hinged Kit	VJ1816

	MEDVRAL7035 Air Vents	Material: Polyamide Package: Set of 2 pieces 2 air vents must be installed to ensure sufficient air circulation and prevent condensation. Complete with template and screws. The air vents should be mounted in the upper and lower part of the enclosure if possible.
	SEDV Small Drain Vent	Material: Polyamide Package: Set of 2 pieces 2 air vents must be mounted per enclosure to ensure sufficient air circulation and prevent condensation water.
	VJNMH Non-metallic Hinges	Material: Polyamide Package: Set of 2 pieces Allows the cover to open at an angle exceeding 180°. Cover can be lifted off and reinstalled without tools (optional upon request). Adjustment of pivot pin makes cover unremovable.
	VJPL-KIT Padlockable Latch	Material: 316 Stainless Steel 2 Latches are required on enclosures 12 x 10 and larger to maintain UL Listing.
	VJLL-KIT Twist Latch	Material: 316 Stainless Steel 2 Latches are required on enclosures 12 x 10 and larger to maintain UL Listing.
	SO-05 .50" Aluminum Back Panel Stand Off	Material: Aluminum Length inches (mm): .5 (12.7) 10-32 thread to match back panel inserts and screws.
	SO-10 1" Aluminum Back Panel Stand Off	Material: Aluminum Length inches (mm): 1 (25.4) 10-32 thread to match back panel inserts and screws.
	SO-20 2" Aluminum Back Panel Stand Off	Material: Aluminum Length inches (mm): 2 (50.8) 10-32 thread to match back panel inserts and screws.
	SO-30 3" Aluminum Back Panel Stand Off	Material: Aluminum Length inches (mm): 3 (76.2) 10-32 thread to match back panel inserts and screws.
	SO-3.5 3.5" Aluminum Back Panel Stand Off	Material: Aluminum Length inches (mm): 3.5 (88.9) 10-32 thread to match back panel inserts and screws.
	SO-40 4" Aluminum Back Panel Stand Off	Material: Aluminum Length inches (mm): 4 (101.6) 10-32 thread to match back panel inserts and screws.